

Neighbourhood Profile Update Cambridge City South Neighbourhood

March 2011



Steve Kerridge,
Neighbourhood Policing
Inspector

Lynda Kilkelly, Safer
Communities Manager,
Cambridge City Council



1. INTRODUCTION	2
Aim	2
Methodology	2
2 PREVIOUS PRIORITIES & ENGAGEMENT	3
ACTIVITY	
Previous Priorities	3
Engagement Activity	4
3 EMERGING ISSUES	5 - 9
4 CURRENT CRIME & INCIDENT LEVELS	10 - 12
5 RECOMMENDATIONS	13

1. Introduction

Aim

The aim of the Neighbourhood profile update is to provide an overview of action taken since the last reporting period, identify ongoing and emerging crime and disorder issues, and provide recommendations for future priorities and activity in order to facilitate effective policing and partnership working in the area.

The document should be used to inform multi-agency neighbourhood panel meetings and neighbourhood policing teams, so that issues can be identified, effectively prioritised and partnership problem solving activity undertaken.

Methodology

This document was produced using the following data sources:

- Crime and Incident data from October 10 – January 11 and as a comparison data from June 10 – September 10 and October 09 – January 10.
- Information from the Neighbourhood Policing teams January/February 2011.
- Cambridge City Council, City Services data, October 2010 – January 2011, and as a comparison, data from the same period the previous year.

Previous Priorities & Engagement Activity

Previous Priorities

At the neighbourhood panel meeting on 11th November, the following issues were adopted as priorities. The tables below summarise action taken and the current situation regarding the priorities that were set:

Anti-social behaviour (ASB) in Paget Road and Foster Road, Trumpington	
Objective	<ol style="list-style-type: none"> 1. Reduce calls for service re. ASB to the area. 2. To secure prosecutions / alternative methods of disposal to acts of ASB where lawful, necessary and proportionate to do so. 3. To seek to increase community confidence and trust in the work of Police and partners.
Action Taken	<p>Tenancy action has been taken against two problematic addresses. The City Council has received very few reports of ASB since this action was taken last year.</p> <p>The area has also been regularly and frequently patrolled over the last panel period. This consists of over twenty individual patrols lasting between 10 and 40 minutes at a time. Patrols have been carried out by both PCSOs and Police Officers. None of these patrols have highlighted any action that required further police action.</p>
Current Situation	<p>ASB in the Trumpington area is low at the moment both compared to the same period last year and the preceding panel period. Of the 113 ASB incidents in the Trumpington Beat area in these four months about ten are linked to Paget Road and Foster Road.</p>
Continue or Discharge?	<p>It is recommended that the committee discharge this priority.</p>

ASB in Cherry Hinton High Street	
Objective	To reduce incidents of ASB predominately outside Tesco Express and provide reassurance to staff and public.
Action Taken	The problem was largely caused by groups of young people gathering in the location and behaving badly. This area has been regularly and frequently patrolled over the last panel period. This consists of over 20 individual patrols lasting between 10 and 90 minutes at a time. This has resulted in: <ol style="list-style-type: none"> 1. Moving on a total of 23 individuals on several different occasions. 2. Two youths issued with Guardian Awareness forms for underage smoking. 3. One moped rider reported for no documents.
Current Situation	Reports of ASB in Cherry Hinton have fallen overall in comparison to the previous period and the staff at Tesco has informed patrolling officers that the situation has improved. Recent policing activity shows that enforcement action is still being taken and better weather and longer daylight hours it is suggested that policing activity needs to be maintained in this area.
Continue or Discharge?	It is recommended that the committee continue with this priority.

Engagement Activity

Engagement events permitting members of the public to meet the City South and other Cambridge City Neighbourhood Policing Teams are listed on the Constabulary's website.

They include monthly surgeries at Waitrose, Trumpington, Addenbrooke's Hospital Concourse and Cherry Hinton Village Centre.

For more private matters, officers will be happy to arrange a meeting at your convenience or discuss matters via telephone.

For further details please visit www.cambs.police.uk and look for the "My Neighbourhood" link or call 0345 456 456 4.

4. Emerging Issues

Neighbourhood trends

Offence levels across City South have decreased compared to the previous period and the same period last year with 523 offences in the last four months. Offences were very low in December but increased again in January. Anti-social behaviour (ASB) incidents have decreased compared the previous and the same period last year.

Trumpington

- Total crime in Trumpington has decreased compared to the previous period (216 offences vs. 251 offences) but showed a small increase in comparison to the previous year.
- Dwelling burglary offences have increased from 5 offences in the previous period to 16 offences in this period. This is also an increase compared to the same period last year (6). There doesn't appear to be a common MO used; in a number of these offences electrical items such as televisions, games consoles and laptops were stolen.
- Violent crime offences have remained relatively stable at 40 offences. In thirteen of these offences an offender has been arrested and charged.
- Theft from vehicle offences have decreased compared to the previous period (21 offences vs. 32 offences) but remained stable compared to the same period last year (23 offences). There were five offences during October at the same location on the High Street; bags, a laptop and a mobile phone were stolen.
- Cycle theft offences have decreased compared to the previous period (55 offences vs. 67 offences) but increased compared to the same period last year (45 offences). Common locations for cycle theft offences were Gonville Place, Lensfield Road, Norwich Street and Trumpington Road.
- ASB incidents have decreased to 113 incidents compared to the previous period (155 incidents) and the same period last year (157 incidents). There were four complaints about people sleeping and drinking alcohol in the Queen Anne car park and refusing to leave when challenged. Six calls from Hanover Court concerned the informant complaining about a neighbour being rowdy and playing loud music. Six incidents occurred at Cambridge Railway Station, which included a passenger being verbally abusive to staff, a passenger refusing to leave the station and another passenger jumping the barriers.

Environmental Issues

- Between October 2010 and January 2011 there were 2 reports of abandoned vehicles in the ward, compared with 6 during the same period the previous year. One vehicle was removed and taken to a compound and is currently pending further investigation. An illegally parked sticker was applied to the second vehicle. There were no specific hotspots during either period.
- Between October 2010 and January 2011 there were 37 reports of flytipping within the ward, compared with 27 during the same period the previous year. There was sufficient evidence to issue 14 warning letters to domestic offenders as well as 2 verbal warnings. In addition, two cases are currently pending further investigation. Specific hotspots during the 2010/11 period were Bentinck Street (7), George IV Street (6), Anstey Way (5, 7 compared with the same period the previous year), Hills Road (4). Additional hotspots during the same period the previous year were Monkswell and Russell Court, both with 3.
- Between October 2010 and January 2011, 14 derelict cycles were dealt with, compared with 36 during the same period the previous year. There were no specific hotspots during the 2010/11 period, but Hauxton Road (8), Coronation Street and Shelford Road (both with 4) and Gonville Place (3) were the hotspots during the same period the previous year.
- Between October 2010 and January 2011, and during the same period the previous year, three needles were reported; both related to one-off reports during each period (on the corner of Union Road/Hanover Court in the 2010/11 period and in bushes near Queen Anne Car Park at Gonville Place during the same period the previous year).

Cherry Hinton

- Total crime in Cherry Hinton has decreased compared to the previous period (123 offences vs. 197 offences) but has remained fairly stable compared to the same period last year (118 offences).
- Dwelling burglary offences have more than halved compared to both the previous period (8 offences vs. 18 offences) and the same period last year (20 offences). In three of the offences the offenders distracted the victims by pretending to be either police officers or from the water board whilst they stole cash from the victims. The victims were all female and in their eighties and nineties.
- There were seven theft of vehicle offences in this period compared to three offences in both the previous period and the same period last year. Offenders didn't appear to be selecting specific vehicles and a minibus, a pickup, moped and small cars were all targeted.

- Criminal damage offences have decreased compared to the previous period (26 offences vs. 38 offences) but increased compared to the same period last year (19 offences). Eleven vehicles were damaged in Chequers Close, ten of which had their tyres slashed on the same evening in January.
- ASB incidents have decreased from 133 incidents in the previous period to 121 incidents in this period. This is an increase compared to the same period last year (101 incidents). Three calls from Arran Close concern youth congregating in the stairwell, which is concerning the elderly residents. There were fifteen calls from Coalville Road, three concern neighbours being noisy and playing music whilst another eleven concern youths congregating in the area shouting, screaming and riding mopeds. Six of the eight calls from Tesco, Rectory Terrace concern youth congregating outside the store, throwing things at customers, and coming in and out of the store when they don't want to buy anything, just to cause a nuisance. In five calls from a particular property on Walpole Road the informant complained about youths using his garden overnight and leaving their beer bottles behind.

Environmental Issues

- Between October 2010 and January 2011 there were 10 reports of abandoned vehicles in the ward, compared with 8 during the same period the previous year. This included 3 vehicles, which were not on site following inspection and one, which was later claimed by its owner. In addition, 3 vehicles were impounded on behalf of the DVLA for not having valid road tax, 2 of which were subsequently destroyed for non-payment of the DVLA fine. There were no specific hotspots during either period.
- Between October 2010 and January 2011 there were 24 reports of fly tipping within the ward, compared with 22 during the same period the previous year. There was sufficient evidence to investigate 3 cases further, which are currently pending further action. Colville Road (4, 3 during the same period the previous year) and Fulbourn Road (5, 3 during the same period the previous year) were the hotspots. Teversham Drift was also a hotspot during the same period the previous year with 3.
- Between October 2010 and January 2011, 13 derelict cycles were dealt with, compared with 17 during the same period the previous year. Headington Drive (3) was a hotspot during the 2010/11 period and there were no specific hotspots during the same period the previous year.

- Between October 2010 and January 2011, 4 needles were reported in the ward compared with one during the same period the previous year. Three were removed from shrub beds at Cherry Hinton Hall.

Queen Ediths

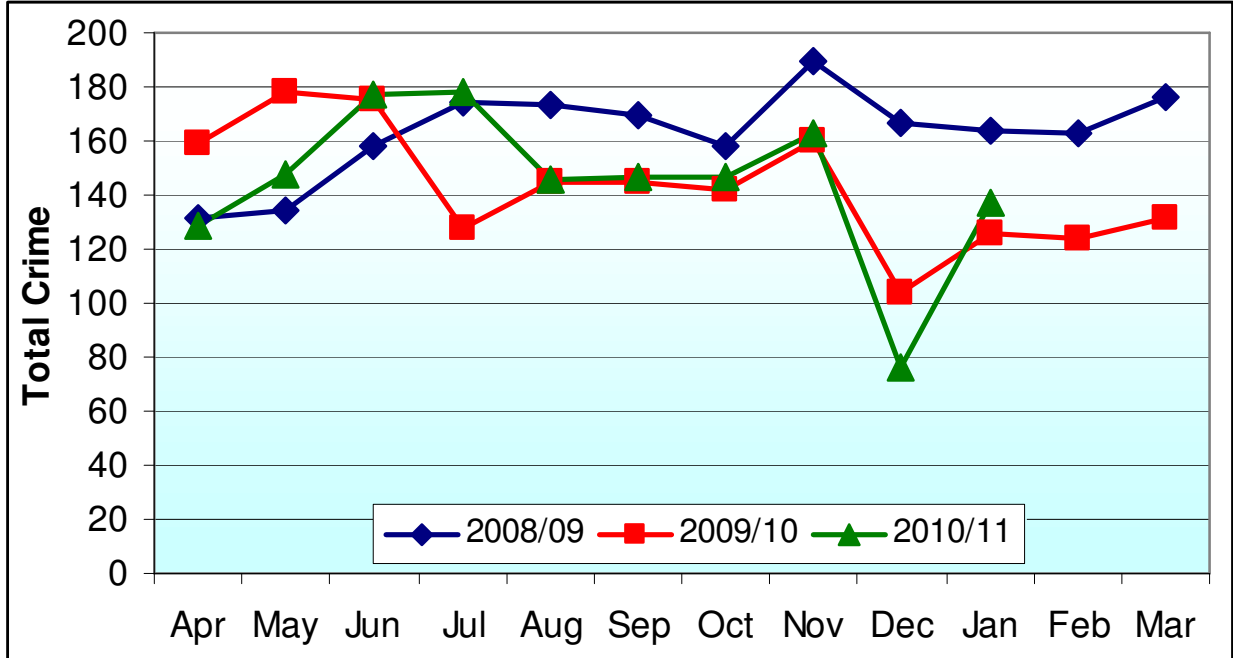
- Total crime has decreased in Queen Ediths compared to the previous period (184 offences vs. 200 offences) and the same period in the previous year (206 offences).
- Dwelling burglary offences have remained stable compared to the previous period (21 offences vs. 18 offences) but decreased compared to the same period last year (37 offences). Thirteen of these offences occurred in November and in the majority of them offenders gained entry by forcing a door or window. There were also two burglaries similar to those in Cherry Hinton where the victim was distracted by offenders claiming to be from the water board.
- Violent crime offences have decreased compared to the previous period (29 offences vs. 44 offences) but increased compared to the same period last year (16 offences). An offender has been arrested and charged in 12 of these offences.
- Theft from vehicle offences has remained stable compared to both the previous period (19 offences vs. 21 offences) and the same period last year (20 offences). Twelve of the vehicles had their windows smashed and items including laptops, satellite navigation systems, mobile phones and handbags stolen.
- Cycle theft offences have increased from 32 offences in the previous period to 44 offences in this period. Levels have remained stable compared to the same period last year (46 offences). Hills Road was the most common location for cycle theft offences (21), six of which occurred at Addenbrooke's.
- Thirteen of the other crime offences were thefts at Addenbrooke's in which patients, visitors and staff had cash or mobile phones stolen.
- ASB incidents in Queen Ediths have decreased compared to both the previous period (104 incidents vs. 123 incidents) and the same period last year (129 offences). There were eight incidents at Queen Ediths Way about youths congregating in the road and throwing things. Eleven calls from Addenbrooke's appear to be unrelated and mainly concern patients or relatives being abusive and aggressive. Two of the three calls from Gunhild Close concern youths riding mopeds through the children's play area; the informants are concerned about this due to the icy conditions.

Environmental Issues

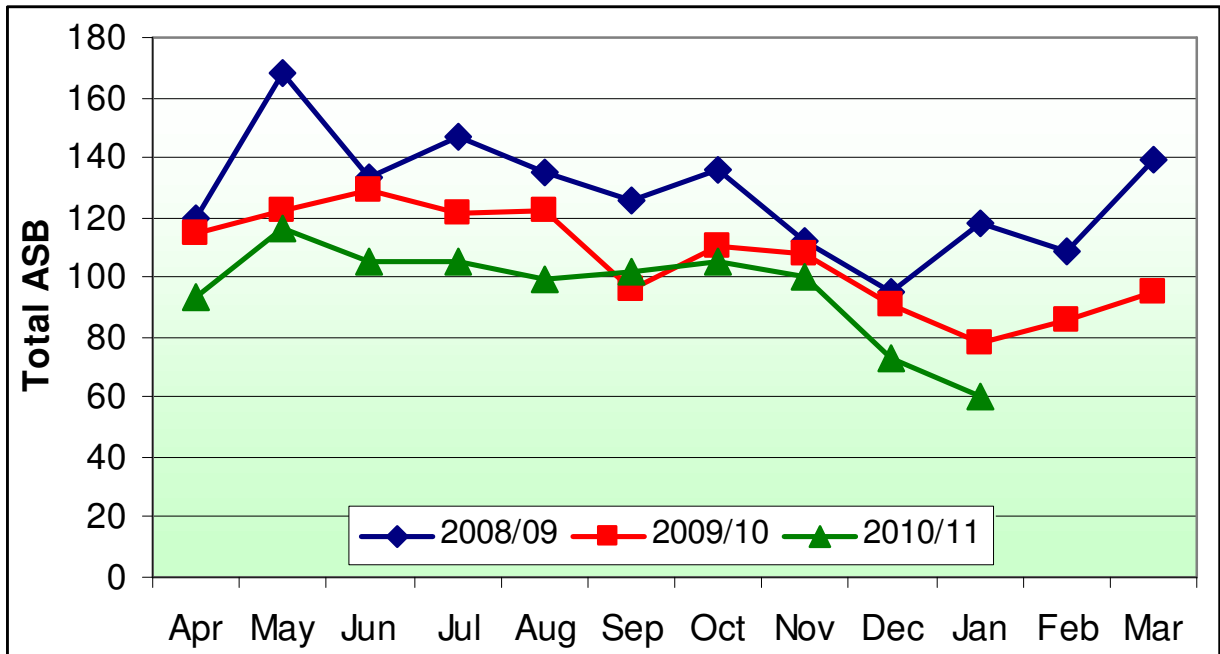
- Between October 2010 and January 2011 there were 10 reports of abandoned vehicles in the ward, compared with 5 during the same period the previous year. This included 4 vehicles, which were not on site following inspection and 2, which were later claimed by its owner. In addition, one vehicle was impounded on behalf of the DVLA for not having valid road tax, but was subsequently released following payment of the DVLA fine. Rathmore Road (3) was a hotspot during the 2010/11 period, but there were no specific hotspots during the same period the previous year.
- Between October 2010 and January 2011 there were 11 reports of fly tipping within the ward, compared with 6 during the same period the previous year. There was insufficient evidence to take formal enforcement action and there were no specific hotspots during either period.
- Between October 2010 and January 2011, 33 derelict cycles were dealt with, compared with 19 during the same period the previous year. This is largely on account of 20 cycles, which were removed from Babraham Road Park & Ride on two separate occasions. There were no further hotspots during the 2010/11 period, but Baldcock Way (5), Blinco Grove and Templemore Close (both with 3) were hotspots during the same period the previous year.
- Between October 2010 and January 2011, no needles were reported, compared with 6 during the same period the previous year, which were removed from a wheelie bin near Elsworth Place.

5. Current Crime and Incident Levels

Total Crime



Total ASB



Current Crime and Incident Levels in Neighbourhood, by Ward

			Dwell. Burg.	Other Burg.	Violent Crime	Robbery	Theft of Vehicle	Theft from Veh.	Cycle Theft	Theft from Shop	Criminal Damage	Other Crime	TOTAL CRIME	TOTAL ASB
N'Hod	City South	Oct 10 – Jan 11	45	30	99	10	11	42	107	5	72	102	523	338
		Jun 10 – Sep 10	41	37	124	4	13	73	130	15	94	117	648	411
		Oct 09 – Jan 10	63	32	77	4	10	38	100	17	68	123	532	387
Wards	Trumpington	Oct 10 – Jan 11	16	16	40	2	2	21	55	2	28	34	216	113
		Jun 10 – Sep 10	5	13	39	4	4	32	67	13	26	48	251	155
		Oct 09 – Jan 10	6	9	42	1	3	23	45	15	25	39	208	157
	Cherry Hinton	Oct 10 – Jan 11	8	5	30	8	7	2	8	3	26	26	123	121
		Jun 10 – Sep 10	18	13	41	0	3	20	31	2	38	31	197	133
		Oct 09 – Jan 10	20	9	19	2	3	15	9	0	19	22	118	101
	Queen Edith	Oct 10 – Jan 11	21	9	29	0	2	19	44	0	18	42	184	104
		Jun 10 – Sep 10	18	11	44	0	6	21	32	0	30	38	200	123
		Oct 09 – Jan 10	37	14	16	1	4	20	46	2	24	42	206	129

ASB Incident Types in the City South Area Neighbourhood, by Ward

Please Note

Incident levels for each of the Wards may not be consistent with the official figures that will be published by the Force and Home Office. This is because the data system used to draw the level of detail needed for the ASB type breakdown for this report may not contain precise locations due to the way incidents are reported e.g. ASB reported where Ward boundaries lie could initially be recorded in the neighbouring ward but subsequently corrected.

The figures should only be used as a guide and not regarded as official statistics for publication.

			ABAN VEH (NOT SMV/OBSTRUCT)	ANIMAL PROBLEMS	BEGGING/VAGRANCY	HOAX CALL TO EMERGENCY SERVICE	MALICIOUS/NUIS. COMMUNICATION	NOISE	PREJUDICE INCIDENT	PROSTITUTION	ROW & INCONSID BEHAVIOUR.	ROW/NUIS - NEIGHBOURS	ROW/NUIS - USE/SALE F/WORKS	STREET DRINKING	TRESPASS	VEH REL NUIS/INAPP VEH USE	Grand Total
N'Hod	City South	Oct 10 – Jan 11	27	2	5	1	42	15	1	1	174	29	1	1	1	38	338
		Jun 10 - Sep 10	32	3	4	3	31	29	1	1	211	45	1	0	0	44	405
Wards	Trumpington	Oct 10 – Jan 11	5	0	4	1	7	6	1	0	66	10	0	0	1	12	113
		Jun 10 - Sep 10	15	1	2	1	11	6	0	1	79	16	0	0	0	18	150
	Cherry Hinton	Oct 10 – Jan 11	6	2	0	0	19	6	0	1	64	12	1	1	0	9	121
		Jun 10 - Sep 10	6	2	0	2	12	5	0	0	82	13	1	0	0	9	132
	Queen Edith	Oct 10 – Jan 11	16	0	1	0	16	3	0	0	66	10	0	0	1	12	113
		Jun 10 - Sep 10	11	0	2	0	8	18	1	0	50	16	0	0	0	17	123

6. Recommendations

The following Neighbourhood Priorities are recommended for consideration:

- It is recommended that the Cherry Hinton ASB patrols in the High Street continue for another panel period.